

Atenção! Estes insetos transmitem a doença de Chagas.



Triatoma infestans



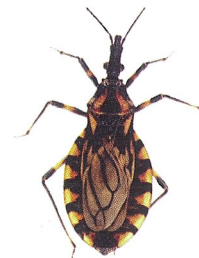
Panstrongylus megistus



Triatoma sordida



Rhodnius neglectus

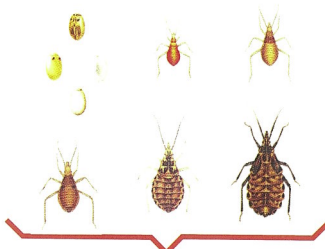


Triatoma brasiliensis

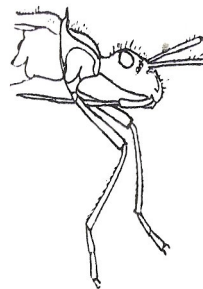


Panstrongylus geniculatus

Ciclo de evolução do barbeiro (Triatomíneos)



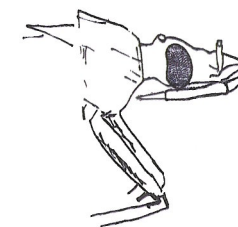
Formas imaturas: ovos e ninfas.



Fitófago:
suga plantas.



Predador:
suga outros insetos.



Hematófago:
este é o verdadeiro barbeiro.